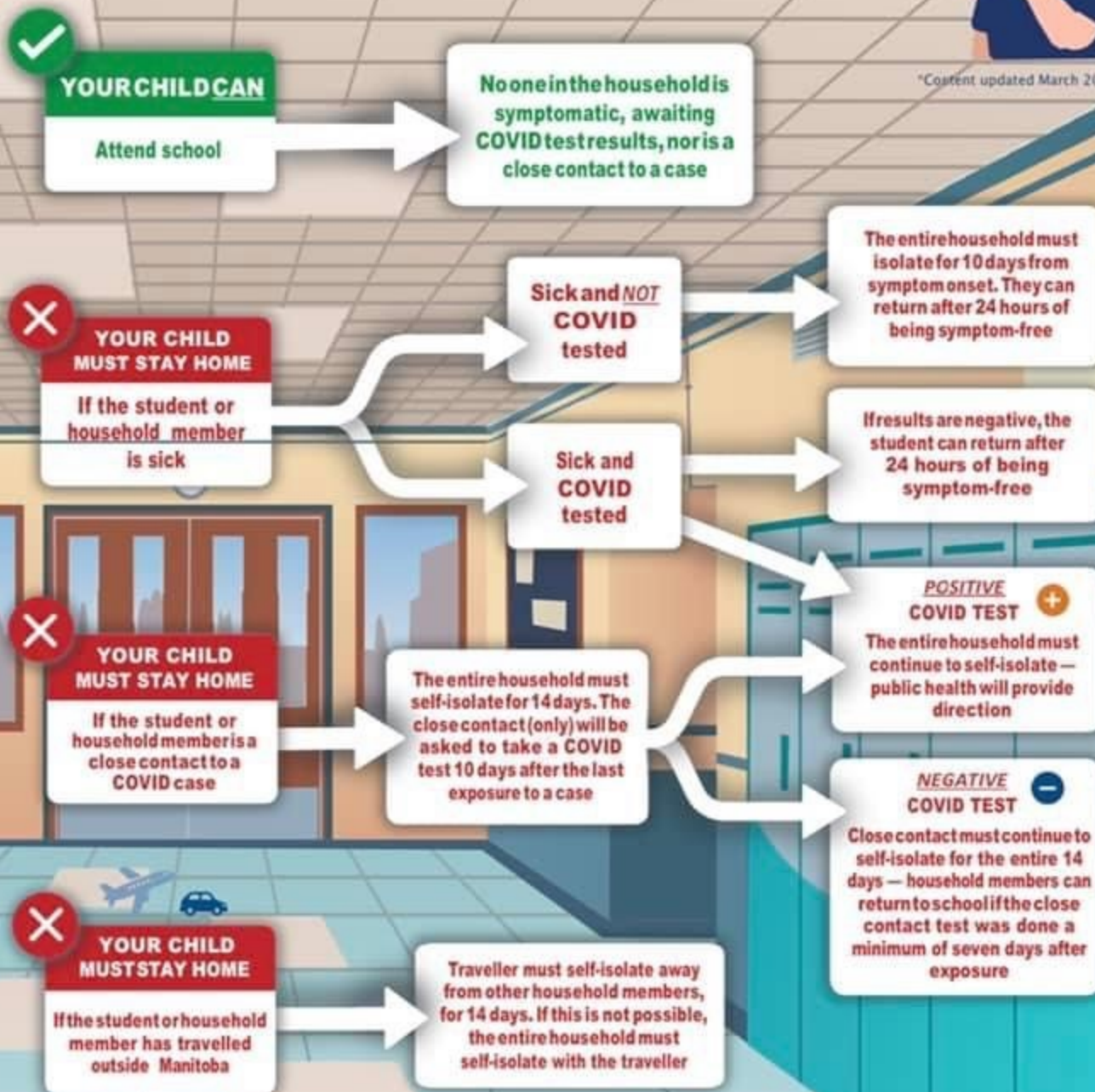


Attending School During COVID-19

WHAT YOU NEED TO KNOW



*Content updated March 2021



*A note on COVID-19 Variants of Concern (VOC)

If a close contact is linked to a VOC case and the contact chooses not to be tested, they must self-isolate for 14 days, followed by an additional 10 days, for a total of 24 days. The rest of the household must also self-isolate for the entire 24 days.

Sources:
Pembina Trails School Division
River East Transcona School Division

Questions? Call Health Links - Info Santé:

204.788.8200 | 1.888.315.9257
www.Manitoba.ca/covid19
MB Ed COVID-19 Bulletin #8

RRSD follows direction from Manitoba Shared Health



Rolling River
School Division